

TUBULAR "KD" WALL MOUNTED DRAINAGE SHELVES

Contents:

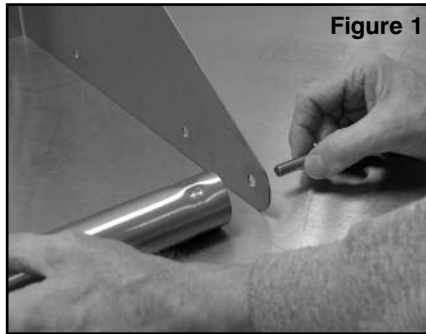
- (2) Side Brackets (L & R)
- (4) Stainless Steel Tubes
- (8) Stainless Steel Button Head Bolts

Tools Required:

7/32" Allen Wrench

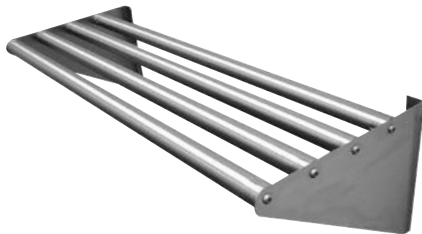
Step 1:

Align Stainless Steel Tubes between left and right Side Brackets - Secure using Stainless Steel Bolts provided. With Shelf resting on level surface, tighten all the Bolts (**Figure 1**).



Step 2:

Mount at desired location and Seal Button Head Bolts with NSF Approved Silicone Sealant.



Edgewood, New York 11717-8380

JULY 2009



Installation Instructions for WALL MOUNTED SORTING SHELVES



**CHECK FOR CONCEALED DAMAGE
FILE CLAIM WITH DELIVERING FREIGHT CARRIER**

Sorting Shelves manufactured by **ADVANCE TABCO**® are designed and constructed store/drain Dish Racks used in a Commercial Dishwasher. **ADVANCE TABCO**® does not recommend use for activities employing harsh and active chemicals. Please consult factory regarding unusual applications.

TRADITIONAL DESIGN WALL MOUNT RACK SHELF INSTALLATION INSTRUCTIONS

Contents:

- (1) Rack Shelf
- (2) Support Brackets
- (8) Stainless Steel Acorn Nuts

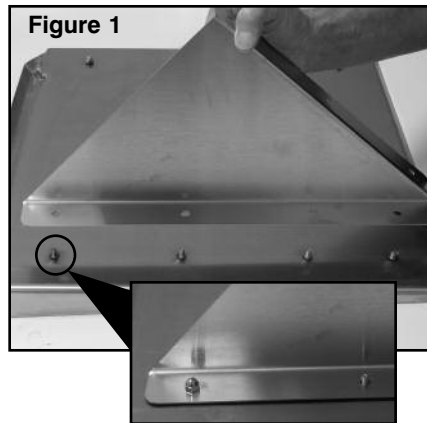
Tools Required:

7/16" Open End Wrench

Step 1:

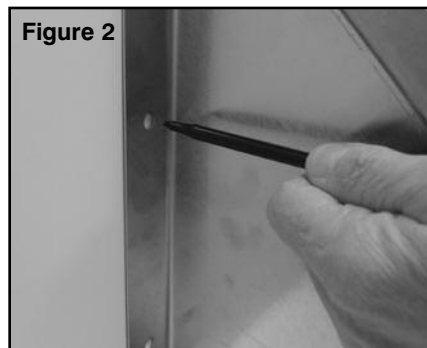
Align (4) holes on Support Bracket with Weld-Studs on bottom of shelf. NOTE: Position Flange towards outside of shelf as shown in **Figure 1**.

Temporarily secure using (2) Stainless Steel Acorn Nuts provided.



Step 2:

Position Rack Shelf onto wall at desired location - mark holes and drill for mounting hardware (Not provided - **Figure 2**).



Step 3:

Remove Support Brackets from underside of rack shelf. Mount Support Brackets to wall (Hardware not provided). Position Rack Shelf onto Support Brackets by aligning studs - Secure with Stainless Steel Acorn Nuts provided.

"KD" TUBULAR STYLE WALL MOUNT RACK SHELF INSTALLATION INSTRUCTIONS

Contents:

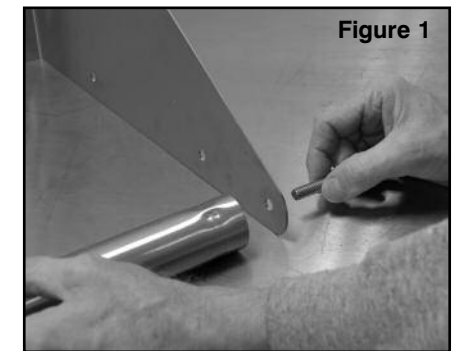
- (2) Side Brackets (L & R)
- (4) Stainless Steel Tubes
- (8) Stainless Steel Button Head Bolts

Tools Required:

7/32" Allen Wrench

Step 1:

Align Stainless Steel Tubes between left and right Side Brackets - Secure using Stainless Steel Bolts provided. With Shelf resting on level surface, tighten all the Bolts (**Figure 1**).



Step 2:

Mount at desired location and Seal Button Head Bolts with NSF Approved Silicone Sealant.

NOTE:

Dish Racks can be stored either at an "Angle" (**Figure 2**) or "Flat" (**Figure 3**).

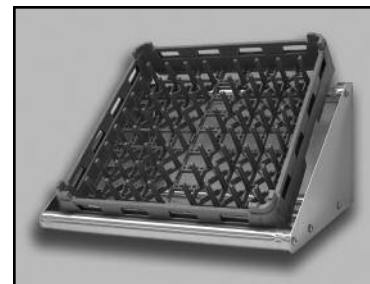


Figure 2



Figure 3